

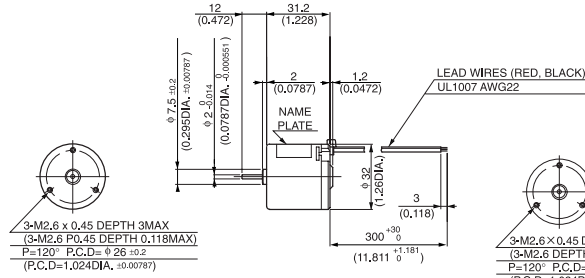
DME33

MODEL CODE	VOLTAGE	OUTPUT	CURRENT
SA	12V	0.7W	0.12A
SB	24V	0.7W	0.06A
BA	12V	3.0W	0.42A
BB	24V	3.0W	0.22A

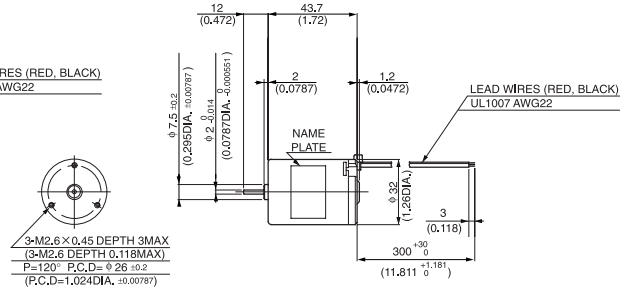


● DIMENSIONS Unit mm(inch)

DME33SA, DME33SB

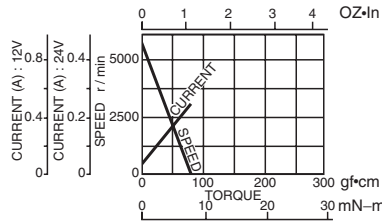


DME33BA, DME33BB

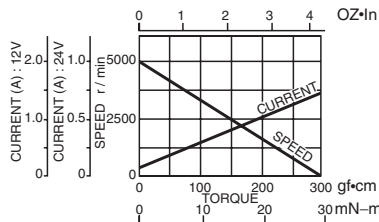


● CURRENT, SPEED-TORQUE CURVE

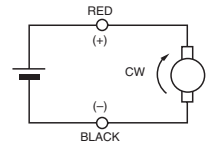
DME33SA, DME33SB



DME33BA, DME33BB



● CONNECTION

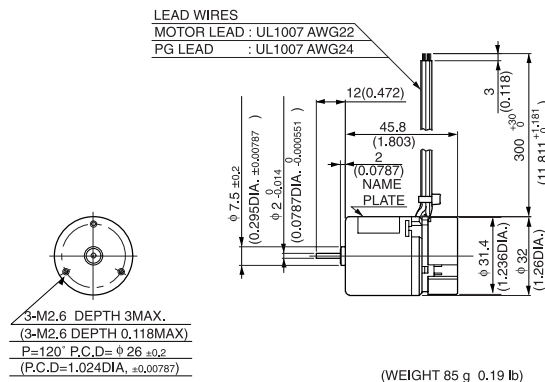


● STANDARD SPECIFICATIONS

Model	Rated					No load		Stall torque		Weight		
	Output W	Voltage V	Torque		Current A	Speed r/min	Current A	Speed r/min	mN-m	oz-in	Weight	
			mN-m	oz-in							g	lb
DME33SA	0.7	12	1.5	0.21	0.12	4500	0.05	5500	7.8	1.11	70	0.15
DME33SB	0.7	24	1.5	0.21	0.06	4500	0.02	5500	7.8	1.11	70	0.15
DME33BA	3	12	7.8	1.11	0.42	3700	0.06	5000	29	4.17	100	0.22
DME33BB	3	24	7.8	1.11	0.22	3700	0.04	5000	29	4.17	100	0.22

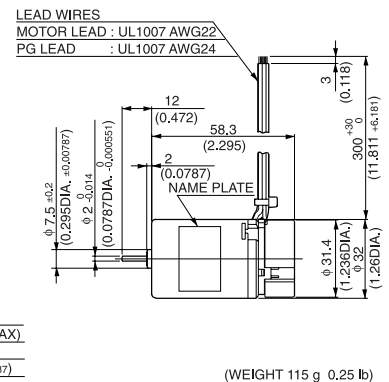
● REVOLUTION SENSOR MAGNET TYPE

DME33SMA, DME33SMB



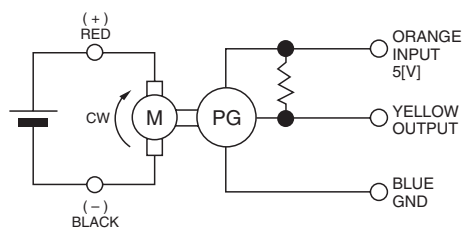
(WEIGHT 85 g 0.19 lb)

DME33BMA, DME33BMB



(WEIGHT 115 g 0.25 lb)

● CONNECTION OF REVOLUTION SENSOR



● SPECIFICATION OF REVOLUTION SENSOR SHOWN ON PAGE 8.

DME33

MODEL CODE	VOLTAGE	OUTPUT	CURRENT
SA	12V	0.7W	0.12A
SB	24V	0.7W	0.06A
BA	12V	3.0W	0.42A
BB	24V	3.0W	0.22A

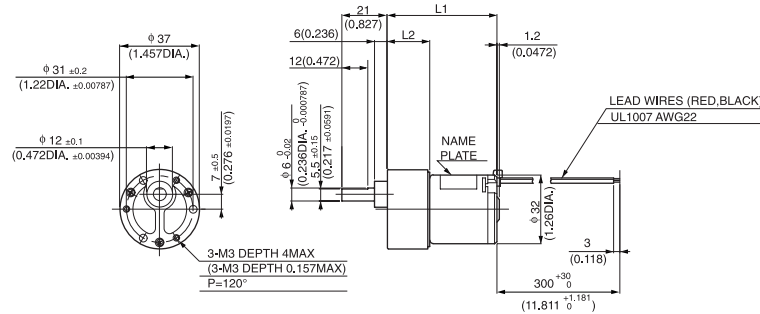
WITH GEARBOX
36G

Gear heads for
intermittent drive



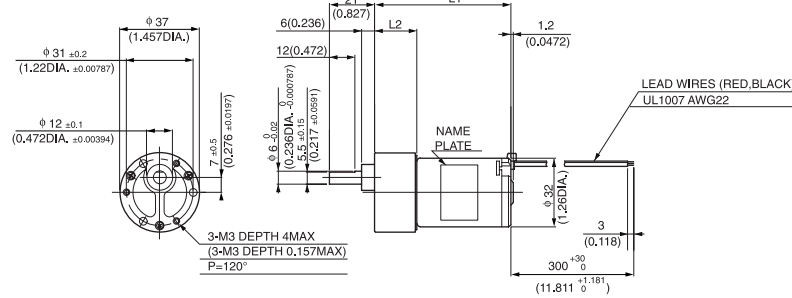
36G

● DIMENSIONS Unit mm(inch)
DME33S36G



GEAR RATIO	L1		L2		WEIGHT	
	(mm)	(inch)	(mm)	(inch)	g	lb
10	51.0	2.008	19.8	0.78	170	0.37
18~30	53.5	2.106	22.3	0.878		
50~100	56.0	2.204	24.8	0.976		
120~300	58.5	2.303	27.3	1.075	190	0.42
400~600	61.0	2.402	29.8	1.173		

DME33B36G



GEAR RATIO	L1		L2		WEIGHT	
	(mm)	(inch)	(mm)	(inch)	g	lb
10	63.5	2.5	19.8	0.78	200	0.44
18~30	66.0	2.598	22.3	0.878		
50~100	68.5	2.697	24.8	0.976		
120~300	71.0	2.795	27.3	1.075	220	0.49
400~600	73.5	2.894	29.8	1.173		

● with 36G TYPE GEARBOX

Model	Gear ratio		10	*18	*20	*30	50	60	75	100	*120	*150	*180
	Rated speed	r/min	450	250	225	150	90	75	60	45	37.5	30	25
DME33S36G □ ☆	Rated torque	N·m	0.011	0.018	0.021	0.032	0.048	0.058	0.072	0.096	0.098	0.12	0.15
		oz·in	1.67	2.64	3.06	4.58	6.80	8.19	10.28	13.61	13.89	18.05	22.22
DME33B36G □ ☆	Rated speed	r/min	370	205	185	123	74	61.6	49.3	40	34	28.4	24.4
		Rated torque	N·m	0.063	0.1	0.11	0.16	0.25	0.3	0.38	0.39	0.39	0.39
		oz·in	9.03	13.89	15.28	23.61	36.11	43.05	54.16	55.55	55.55	55.55	55.55
Model	Gear ratio		*200	*250	*300	400	500	600					
	Rated speed	r/min	22.5	18	15	11.2	9	7.7					
DME33S36G □ ☆	Rated torque	N·m	0.16	0.21	0.25	0.31	0.39	0.39					
		oz·in	23.61	30.55	36.11	44.44	55.55	55.55					
DME33B36G □ ☆	Rated speed	r/min	22.2	18.2	15.4	11.7	9.5	8					
		Rated torque	N·m	0.39	0.39	0.39	0.39	0.39	0.39				
		oz·in	55.55	55.55	55.55	55.55	55.55	55.55					

NOTE 1: Enter the required reduction ratio in the □.
2: *Rotation of gearbox shaft is in reverse of rotation of motor.
3: Enter the required voltage A or B in the ☆.