

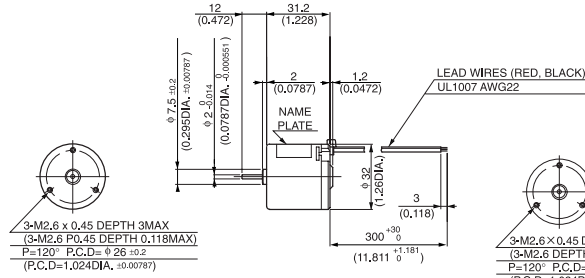
# DME33

MODEL CODE	VOLTAGE	OUTPUT	CURRENT
SA	12V	0.7W	0.12A
SB	24V	0.7W	0.06A
BA	12V	3.0W	0.42A
BB	24V	3.0W	0.22A

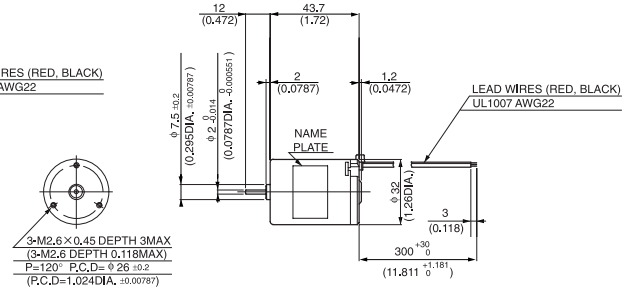


## ● DIMENSIONS Unit mm(inch)

### DME33SA, DME33SB

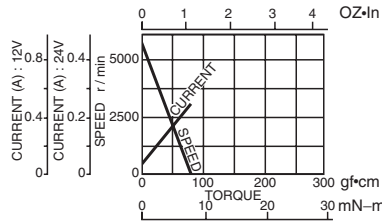


### DME33BA, DME33BB

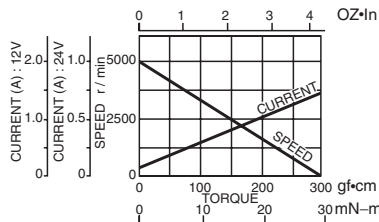


## ● CURRENT, SPEED-TORQUE CURVE

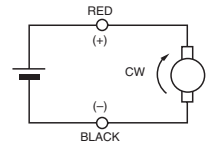
### DME33SA, DME33SB



### DME33BA, DME33BB



## ● CONNECTION

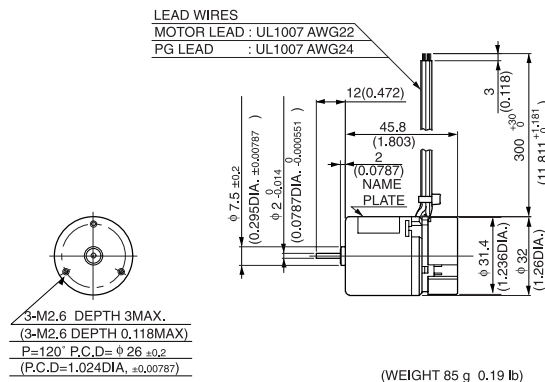


## ● STANDARD SPECIFICATIONS

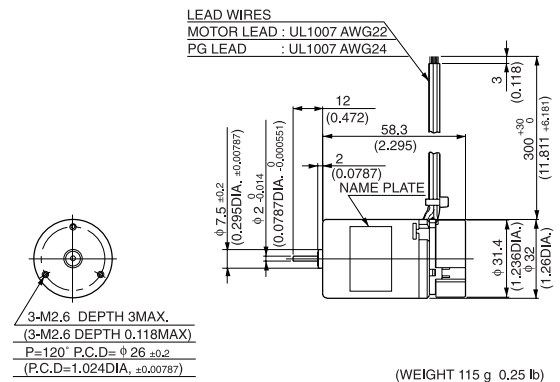
Model	Rated					No load		Stall torque		Weight		
	Output W	Voltage V	Torque		Current A	Speed r/min	Current A	Speed r/min	mN-m	oz-in	Weight	
			mN-m	oz-in							g	lb
DME33SA	0.7	12	1.5	0.21	0.12	4500	0.05	5500	7.8	1.11	70	0.15
DME33SB	0.7	24	1.5	0.21	0.06	4500	0.02	5500	7.8	1.11	70	0.15
DME33BA	3	12	7.8	1.11	0.42	3700	0.06	5000	29	4.17	100	0.22
DME33BB	3	24	7.8	1.11	0.22	3700	0.04	5000	29	4.17	100	0.22

## ● REVOLUTION SENSOR MAGNET TYPE

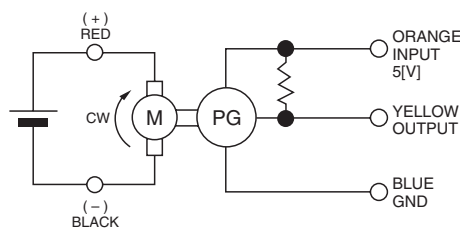
### DME33SMA, DME33SMB



### DME33BMA, DME33BMB



## ● CONNECTION OF REVOLUTION SENSOR



## ● SPECIFICATION OF REVOLUTION SENSOR SHOWN ON PAGE 8.

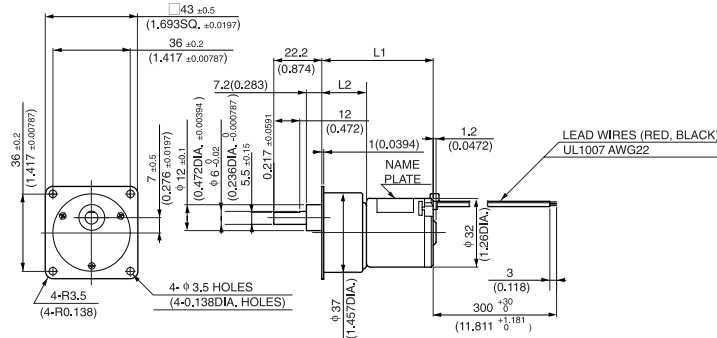
WITH GEARBOX  
**43G**

Gear heads for  
intermittent drive



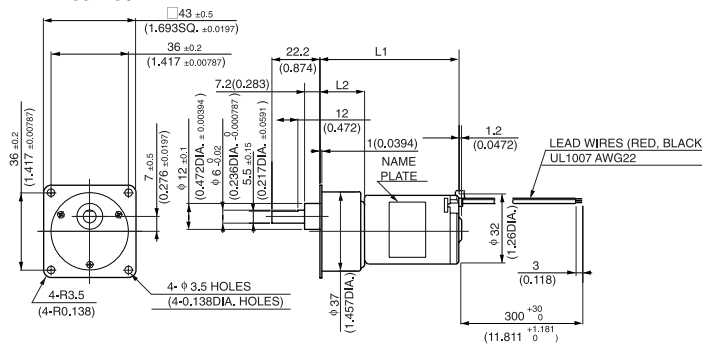
43G

● DIMENSIONS Unit mm(inch)  
**DME33S43G**



GEAR RATIO	L1		L2		WEIGHT	
	(mm)	(inch)	(mm)	(inch)	g	lb
10	49.5	1.949	18.3	0.720	200	0.44
18-30	52	2.047	20.8	0.819		
50-100	54.5	2.146	23.3	0.917		
120-300	57	2.244	25.8	1.016		
400-600	59.5	2.343	28.3	1.114		

**DME33B43G**



GEAR RATIO	L1		L2		WEIGHT	
	(mm)	(inch)	(mm)	(inch)	g	lb
10	62	2.441	18.3	0.720	220	0.49
18-30	64.5	2.539	20.8	0.819		
50-100	67	2.638	23.3	0.917		
120-300	69.5	2.736	25.8	1.016		
400-600	72	2.835	28.3	1.114		

● with 43G TYPE GEARBOX

Model	Gear ratio		10	*18	*20	*30	50	60	75	100	*120	*150
	Rated speed	r/min	450	250	225	150	90	75	60	45	37.5	30
<b>DME33S43G</b> □ ☆	Rated torque	N·m	0.011	0.018	0.021	0.032	0.048	0.058	0.072	0.096	0.098	0.12
		oz·in	1.67	2.64	3.06	4.58	6.80	8.19	10.28	13.61	13.89	18.05
<b>DME33B43G</b> □ ☆	Rated speed	r/min	370	205	185	123	74	61.6	49.3	40	34	28.4
		Rated torque	N·m	0.064	0.1	0.11	0.16	0.25	0.3	0.38	0.39	0.39
		oz·in	9.03	13.89	15.28	23.61	36.11	43.05	54.16	55.55	55.55	55.55

Model	Gear ratio		*180	*200	*250	*300	400	500	600
	Rated speed	r/min	25	22.5	18	15	11.2	9	7.7
<b>DME33S43G</b> □ ☆	Rated torque	N·m	0.15	0.16	0.21	0.25	0.31	0.39	0.39
		oz·in	22.22	23.61	30.55	36.11	44.44	55.55	55.55
<b>DME33B43G</b> □ ☆	Rated speed	r/min	24.4	22.2	18.2	15.4	11.7	9.5	8
		Rated torque	N·m	0.39	0.39	0.39	0.39	0.39	0.39
		oz·in	55.55	55.55	55.55	55.55	55.55	55.55	55.55

NOTE 1: Enter the required reduction ratio in the □.  
2: \*Rotation of gearbox shaft is in reverse of rotation of motor.  
3: Enter the required voltage A or B in the ☆.