

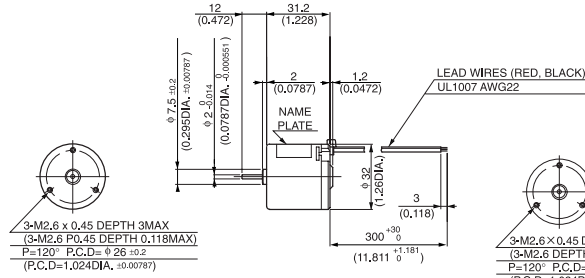
DME33

MODEL CODE	VOLTAGE	OUTPUT	CURRENT
SA	12V	0.7W	0.12A
SB	24V	0.7W	0.06A
BA	12V	3.0W	0.42A
BB	24V	3.0W	0.22A

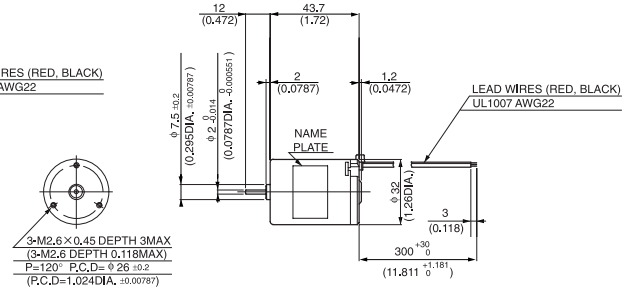


● DIMENSIONS Unit mm(inch)

DME33SA, DME33SB

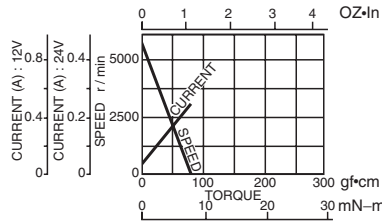


DME33BA, DME33BB

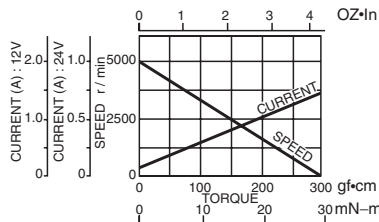


● CURRENT, SPEED-TORQUE CURVE

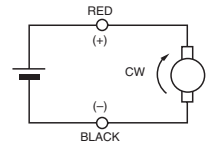
DME33SA, DME33SB



DME33BA, DME33BB



● CONNECTION

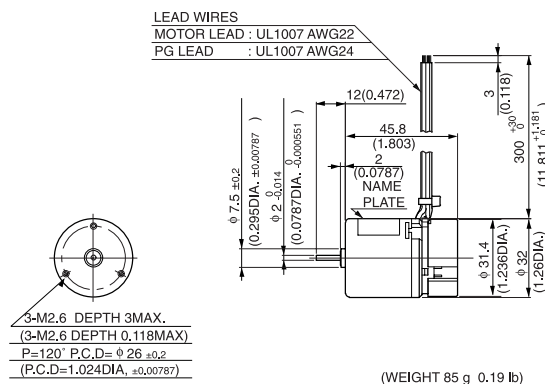


● STANDARD SPECIFICATIONS

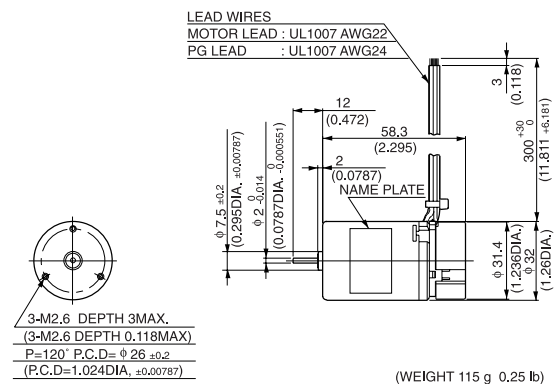
Model	Rated					No load		Stall torque		Weight		
	Output W	Voltage V	Torque		Current A	Speed r/min	Current A	Speed r/min	mN-m	oz-in	Weight	
			mN-m	oz-in							g	lb
DME33SA	0.7	12	1.5	0.21	0.12	4500	0.05	5500	7.8	1.11	70	0.15
DME33SB	0.7	24	1.5	0.21	0.06	4500	0.02	5500	7.8	1.11	70	0.15
DME33BA	3	12	7.8	1.11	0.42	3700	0.06	5000	29	4.17	100	0.22
DME33BB	3	24	7.8	1.11	0.22	3700	0.04	5000	29	4.17	100	0.22

● REVOLUTION SENSOR MAGNET TYPE

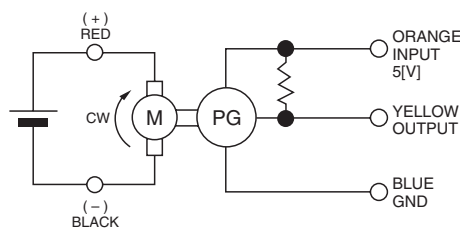
DME33SMA, DME33SMB



DME33BMA, DME33BMB



● CONNECTION OF REVOLUTION SENSOR



● SPECIFICATION OF REVOLUTION SENSOR SHOWN ON PAGE 8.

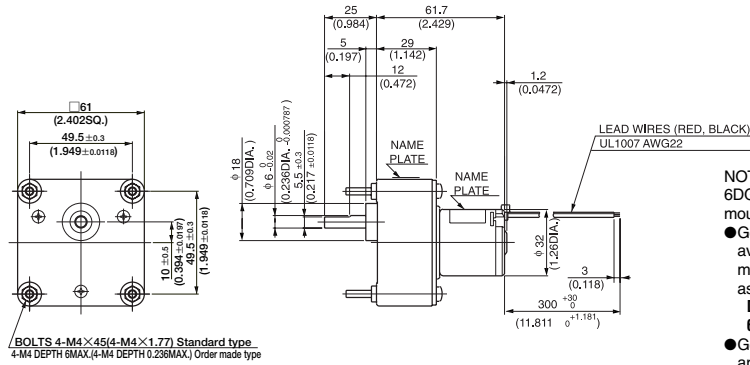
DME33

WITH GEARBOX 6DG



6DG

● DIMENSIONS Unit mm(inch) DME33S6DG



(WEIGHT 370 g 0.82 lb)

NOTE:
6DG gearbox are available with either 4.5mm diameter mounting holes or M4 x 6mm tapped holes.

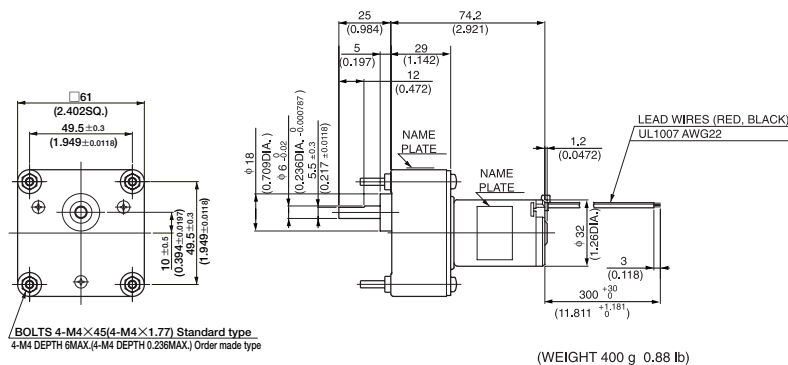
● Gearboxes with 4.5mm diameter mounting holes are available from stock. When ordering, please write the motor model and gearbox model numbers separately, as in the following example:

DME33B6HPB (Pinion shaft motor)

6DG (Gearbox)

● Gearboxes with M4 x 6mm tapped mounting holes are available on request. When ordering, please write the combine motor and gearbox model, as in the following example : **DME33B6H** **B**

DME33B6DG



(WEIGHT 400 g 0.88 lb)

● with 6DG TYPE GEARBOX MOTOR MODEL DME33S6HP☆ or DME33B6HP☆ & GEARBOX MODEL 6DG

Model	Gear ratio												
	Rated speed	r/min	900	360	300	180	150	90	60	45	30	25	18
DME33S6HP☆ & 6DG <input type="checkbox"/>	Rated torque	N-m	0.006	0.015	0.018	0.026	0.032	0.053	0.08	0.11	0.14	0.17	0.24
		oz-in	0.83	2.08	2.50	3.75	4.58	7.50	11.39	15.28	19.44	23.61	33.33
DME33B6HP☆ & 6DG <input type="checkbox"/>	Rated speed	r/min	740	296	246	148	123	74	49.3	37	24.6	20.5	16
		Rated torque	N-m	0.031	0.079	0.095	0.14	0.17	0.28	0.42	0.57	0.77	0.92
	oz-in		4.44	11.25	13.47	19.44	23.61	40.27	59.71	80.55	108.32	130.54	138.87
Model	Gear ratio												
	Rated speed	r/min	15	10	9	6	5	2.4					
DME33S6HP☆ & 6DG <input type="checkbox"/>	Rated torque	N-m	0.28	0.43	0.43	0.65	0.77	0.98					
		oz-in	40.27	61.10	61.10	91.66	109.71	138.87					
DME33B6HP☆ & 6DG <input type="checkbox"/>	Rated speed	r/min	13.9	9.9	8.9	6.1	5.2	2.7					
		Rated torque	N-m	0.98	0.98	0.98	0.98	0.98	0.98				
	oz-in		138.87	138.87	138.87	138.87	138.87	138.87					

NOTE
1: Enter the required reduction ratio in the .
2: *Rotation of gearbox shaft is in reverse of rotation of motor.
3: Enter the required voltage A or B in the ☆.