

3-Phase Hybrid Stepping Motor

3.75°

KR42 series TRISYN

HIGH TORQUE, LOW VIBRATION AND LOW OPERATING NOISE

STANDARD SPECIFICATIONS

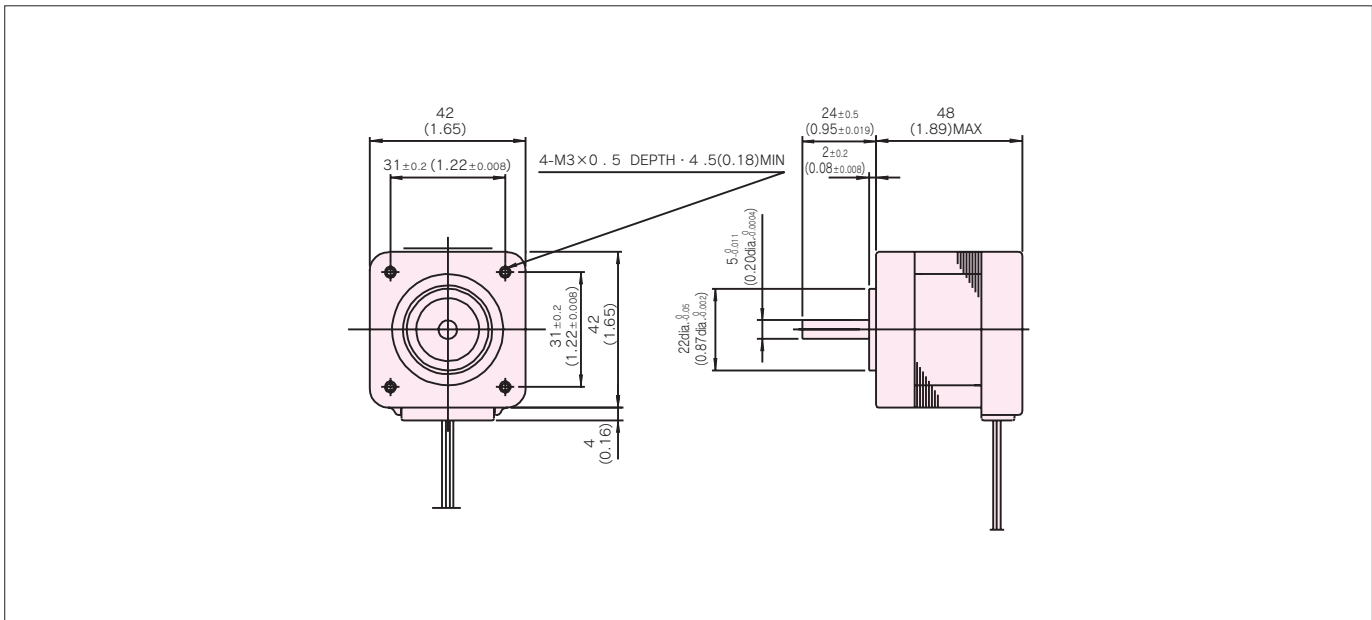
MODEL	UNIT	KR42KM4	
		-551	-552
NUMBER OF PHASES	—	3	
STEP ANGLE	deg./step	3.75	
VOLTAGE	V	3.5	6.5
CURRENT	A/2-PHASE	2.5	1.3
WINDING RESISTANCE	Ω/2-PHASE	1.40	5.0
INDUCTANCE	mH/2-PHASE	1.7	7.5
HOLDING TORQUE	mN · m	※1 118	※2 118
	oz · in	16.7	16.7
DETENT TORQUE	mN · m	9.8	9.8
	oz · in	1.4	1.4
ROTOR INERTIA	g · cm ²	57	57
	oz · in ²	0.31	0.31
WEIGHTS	g	350	
	lb	0.77	
INSULATION CLASS	—	JIS Class E (120°C 248° F)(UL VALUE:CLASS B 130°C 266° F)	
INSULATION RESISTANCE	—	500VDC 100MΩmin.	
DIELECTRIC STRENGTH	—	500VAC 50HZ 1 min.	
OPERATING TEMP. RANGE	°C	0 to 50	
ALLOWABLE TEMP. RISE	K	70	

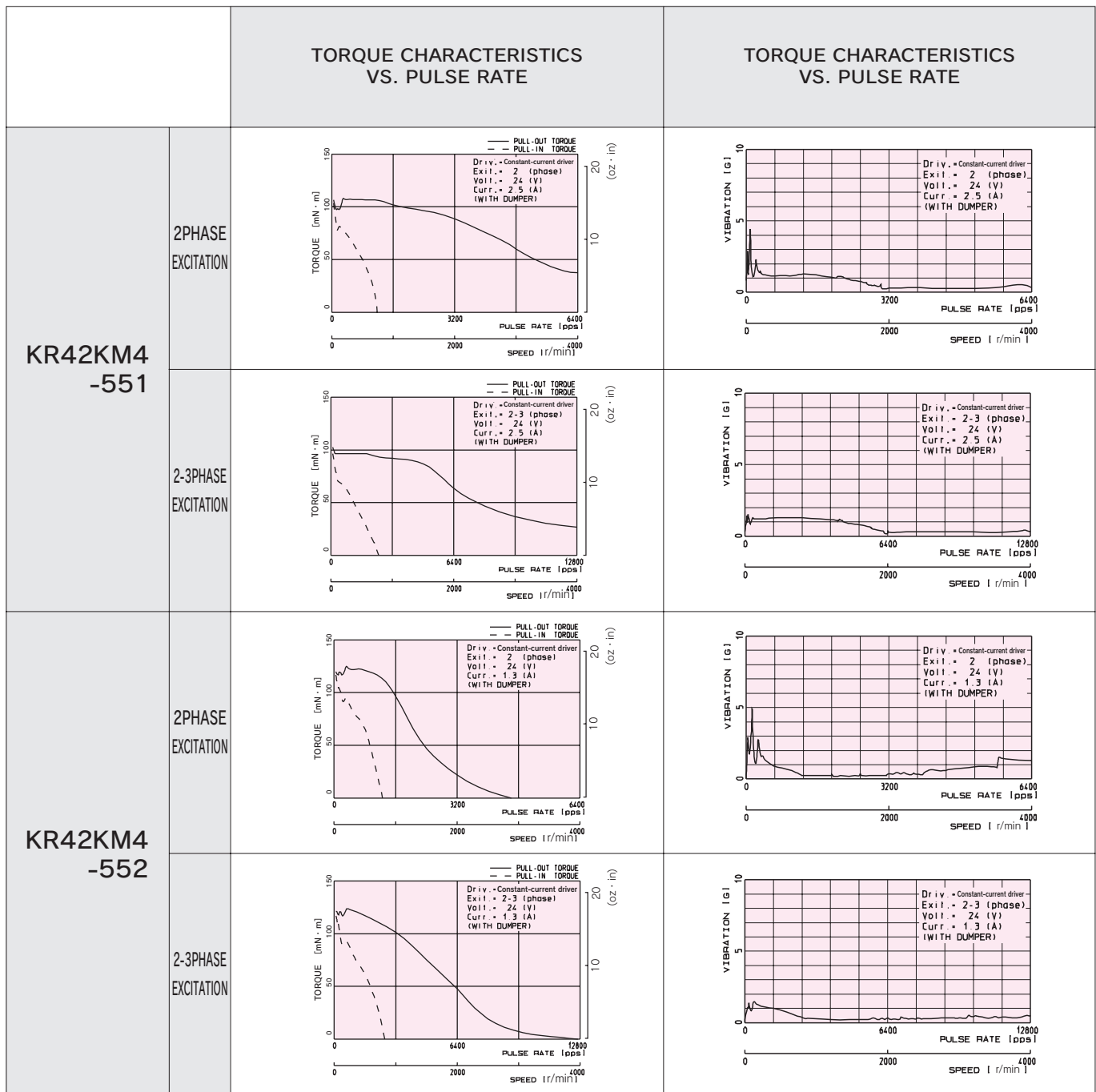
- ※ 1 : 2A/2-Phase
- ※ 2 : 1.3A/2-Phase



KR42KM4

DIMENSIONS unit = mm (inch)





■ CONNECTION CABLE TO MOTOR unit = mm (inch) (Except for KT42EM4-551)

